

Model: RPCA-2 Insulated Curb Adapter (Larger Top)

Standard Construction:

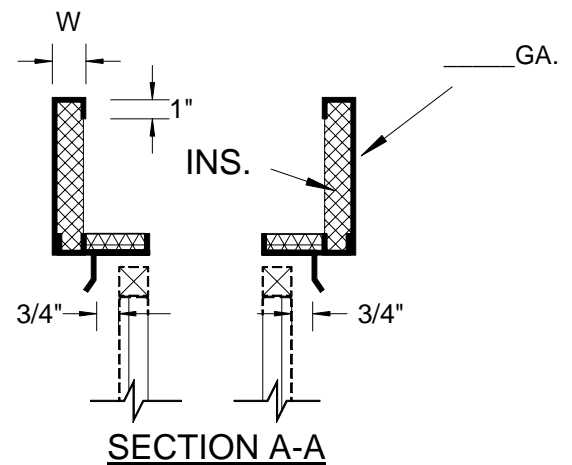
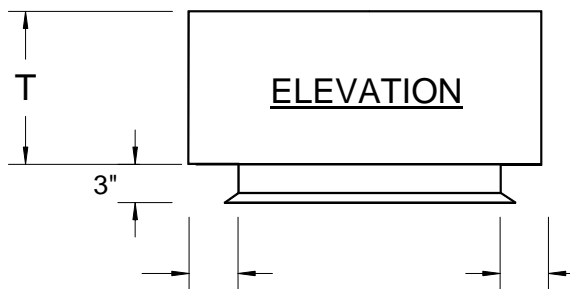
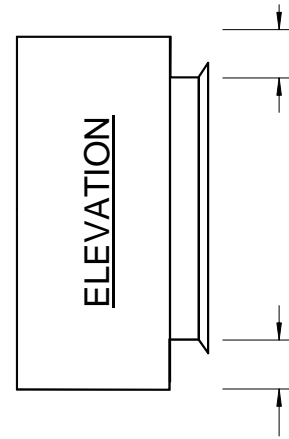
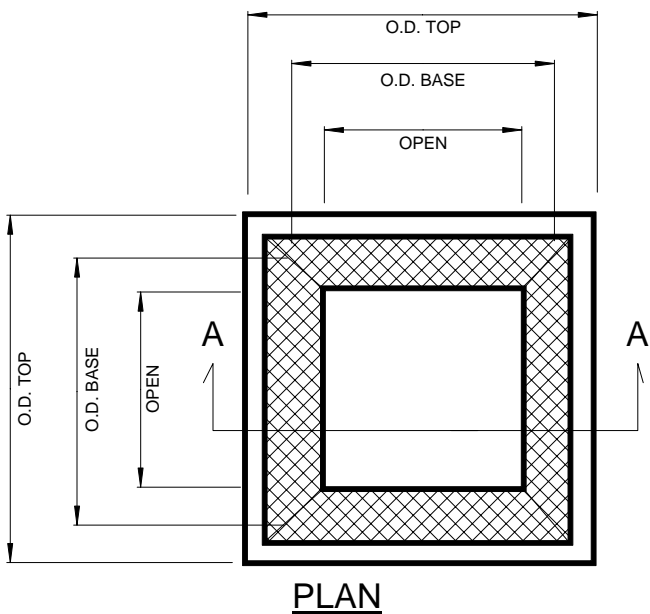
Minimum 18ga. Galvanized construction, 1" insulation glued and pinned. All welds micro-sealed and prime painted after fabrication.

Added Options (When Required):

RPI Job #: -

Project: _____

Architect: _____



Qty.	O.D. BASE	O.D. TOP	T	W	Tag: